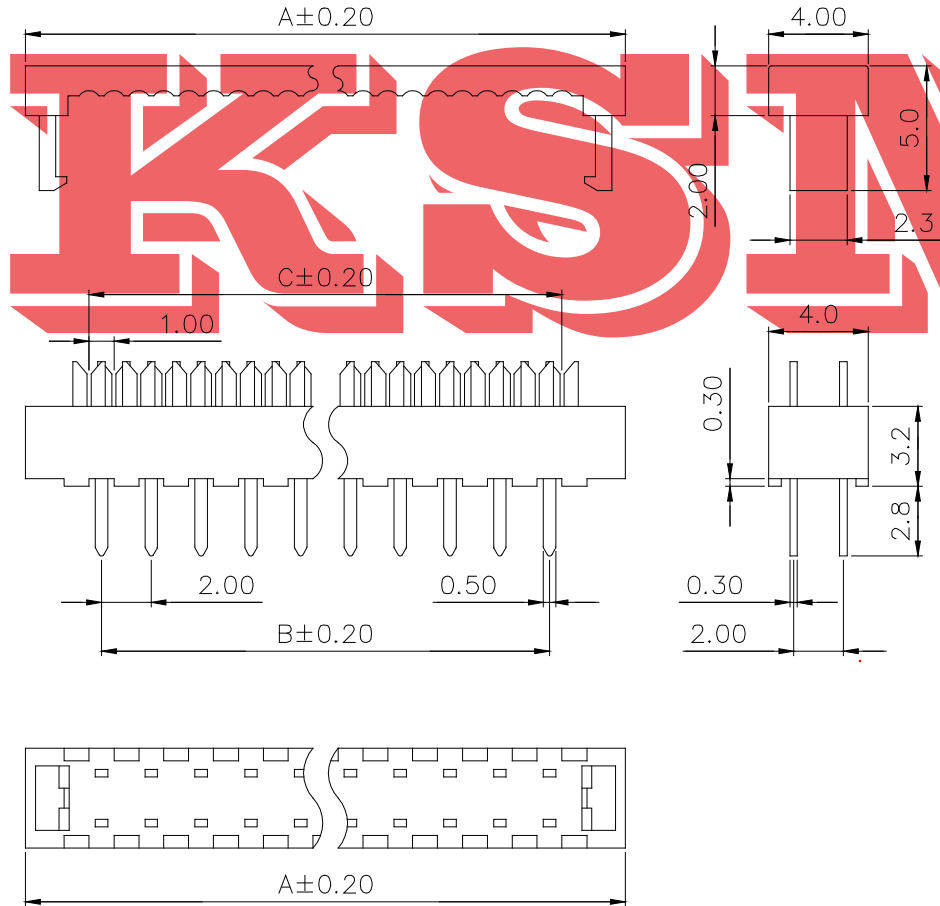


MARK	PLACES	ZONE	ECN	DATE



Material:  
 Insulator: PBT+30% Glass Fiber (UL94V-0).  
 Contact: Copper Alloy.  
 Contact Plated: Gold or Tin over Nickel Plated.

Specification:  
 Current Rating: 1 Amp.  
 Withstanding Voltage: AC 500V for 1 Minute.  
 Insulation Resistance: 1000MΩ Min. at DC 500V.  
 Contact Resistance: 15mΩ Max..  
 Operating Temperature: -40°C ~ +105°C.

Pos.	Dim. A	Dim. B	Dim. C
8	12.10	6.00	7.00
10	14.10	8.00	9.00
12	16.10	10.00	11.00
14	18.10	12.00	13.00
16	20.10	14.00	15.00
18	22.10	16.00	17.00
20	24.10	18.00	19.00
22	26.10	20.00	21.00
24	28.10	22.00	23.00
26	30.10	24.00	25.00
28	32.10	26.00	27.00
30	34.10	28.00	29.00
32	36.10	30.00	31.00
34	38.10	32.00	33.00

Pos.	Dim. A	Dim. B	Dim. C
36	40.10	34.00	35.00
38	42.10	36.00	37.00
40	44.10	38.00	39.00
42	46.10	40.00	41.00
44	48.10	42.00	43.00
46	50.10	44.00	45.00
48	52.10	46.00	47.00
50	54.10	48.00	49.00
52	56.10	50.00	51.00
54	58.10	52.00	53.00
56	60.10	54.00	55.00
58	62.10	56.00	57.00
60	64.10	58.00	59.00

Shanghai ZhouRi Electronics CO., Ltd.

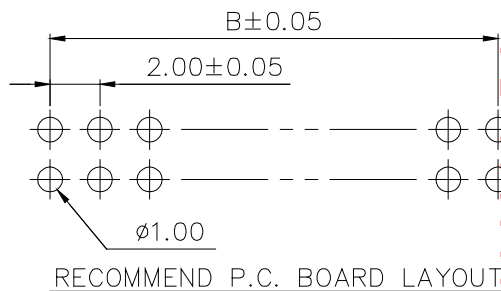
Add: No. 668 Beijing East Road

Tel: 86-21-51571121 53085565

Fax: 86-21-51571120

Http: www.ksmchina.com

E-mail: zhouri11911@163.com



UNLESS OTHERWISE SPECIFIED TOLERANCE		2.00mm Transition IDC Connector		上海洲日电子有限公司 Shanghai ZhouRi Electronics CO.,LTD.	
DIMENSION	DECIMAL	ANGLE	MODEL NO.	IDC	MATERIAL
X.X	±0.3	±1°	DWG. NO.	ZR-IDC-006	FINISH
X.XX	±0.2	±0.5°	Item NO.		QUANTITY
X.XXX	±0.1		REV.	A	SCALE
	+0.05		THE THIRD ANGLE PROJECTION	1:1	UNIT mm
DESIGNED					SIZE A4
CHECKED					SHEET OF PAGES
APPROVED					